



Mekong River Commission

Weekly Wet Season Situation Report in the Lower Mekong River Basin 19-25 September 2023

Prepared by
The Regional Flood and Drought Management Centre
26 September 2023

The MRC is funded by contributions from its Member Countries and Development Partners, including Australia, Belgium (Flanders), the European Union, France, Germany, Japan, the Netherlands, New Zealand, Sweden, and Switzerland.

Copyright © Mekong River Commission, 2021

First published (2021)

Some rights reserved

This work is the product of the Mekong River Commission Secretariat. While all efforts are made to present accurate information, the Secretariat does not guarantee the accuracy of the data included in this work. The boundaries, colours, denomination, and other information shown on any map in this work do not imply any judgement on the part of the MRC concerning the legal status of any territory or the endorsement or acceptance of such boundaries.

Nothing herein shall constitute or be considered to be a limitation upon or waiver of the privileges and immunities of the MRC, all of which are specifically reserved.

This publication may be reproduced in whole or in part and in any form for educational or non-profit purposes without special permission from the copyright holder, provided acknowledgement of the source is made and notification is sent to the MRC. The MRC would appreciate receiving a copy of any publication that uses this publication as a source. This publication cannot be used for sale or for any other commercial purpose whatsoever without permission in writing from the MRC.

Title: Weekly wet season situation report in the Lower Mekong River Basin for 19-25 September 2023

ISSN: 1728-3248

Keywords: flood/drought/weather/Mekong/Tonle Sap

For bibliographic purposes, this volume may be cited as:

Mekong River Commission. (2021). *Weekly wet season situation report in the Lower Mekong River Basin for 19-25 September 2023*. Vientiane: MRC Secretariat.

Information on MRC publications and digital products can be found at
<http://www.mrcmekong.org/publications/>

All queries on rights and licenses should be addressed to:

Mekong River Commission

Documentation and Learning Centre

184 Fa Ngoum Road, Unit 18, Ban Sithane Neua, Sikhottabong District, Vientiane 01000, Lao PDR

Telephone: +856-21 263 263 | E-mail: mracs@mrcmekong.org | www.mrcmekong.org

Contents

- Figures..... v
- Tablevi
- Key Messages 1
- 1 Introduction 3
- 2 General Weather Patterns 4
 - 2.1 Tropical depressions (TD), tropical storms (TS) and typhoons (TY) 5
 - 2.2 Rainfall patterns over the LMB 6
- 3 Water Levels in the Lower Mekong Basin..... 8
- 4 Flash Flood in the Lower Mekong Basin 15
- 5 Drought Monitoring in the Lower Mekong Basin..... 16
- 6 Weather and Water Level Forecast and Flash Flood Information 18
 - 6.1 Weather and rainfall forecast 18
 - 6.2 Water level forecast 19
 - 6.3 Flash Flood Information..... 20
 - 6.4 Drought forecast 20
- 7 Summary and Possible Implications 23
 - 7.1 Rainfall and its forecast 23
 - 7.2 Water level and its forecast 23
 - 7.3 Flash flood and its trends..... 24
 - 7.4 Drought condition and its forecast 24
- Annex 1: Performance of the weekly flood forecasting 25

Figures

- Figure 1.** Summary of weather conditions over the LMB. 4
- Figure 2.** Outlook of wet and dry conditions over the Asian countries by ASMC. 5
- Figure 3.** A tropical depression risk observed on 25 Sep 2023. 5
- Figure 4.** Weekly total rainfall at key stations in the LMB during 19-25 Sep 2023. 6
- Figure 5.** Weekly rainfall distribution over the LMB during 19-25 Sep 2023. 7
- Figure 6.** Key stations and model application for River Monitoring and Flood Forecasting. 8
- Figure 7.** Water level at the Jinghong hydrological station up to 25 Sep 2023. 9
- Figure 8.** Water levels at Chiang Saen in Thailand and Luang Prabang in Lao PDR. 10
- Figure 9.** Water levels Veintiane and Paksane in Lao PDR. 11
- Figure 10.** Weekly water levels at Nakhon Phanom in Thailand and Pakse in Lao PDR. 11
- Figure 11.** Water levels at Stung Treng and Kratie on the Mekong River. 12
- Figure 12.** Seasonal change of inflows and outflows of Tonle Sap Lake 13
- Figure 13.** The seasonal change in monthly flow volume of Tonle Sap Lake. 14
- Figure 14.** Flash Flood Guidance for the next 1-hr, 3-hr and 6-hr on September 25 15
- Figure 15.** Weekly standardized precipitation index from 18 to 24 September 2023. 17
- Figure 16.** Accumulated rainfall forecast (24 h) based on the Global Forecast System (GFS). 19
- Figure 17.** Monthly forecasts of the combined drought index (CDI) for September, October, and November 2023. 21

Table

Table 1. The monthly change in the flow volume of Tonle Sap Lake.	14
Table 2. Weekly River Monitoring Bulletin.	22

Key Messages

Key messages for this weekly report are presented below:

Rainfall and its forecast

- Rainfall focused in the areas from Chiang Saen in Thailand to Tan Chau and Chau Doc in Viet Nam, including the upper, middle and lower parts of the LMB covering Lao PDR and Cambodia, varying from 2.00 millimetres (mm) to 142.60 mm.
- There will be below moderate and moderate rainfall for the next 5 days over the Mekong region from 26 to 30 September 2023 although there is no any movement of tropical storm moving towards the Mekong region.

Water level and its forecast

- According to MRC's observed water level at Jinghong, it showed fluctuating water levels from **536.48 m** and **538.15 m** during 19-25 September 2023. The current level is staying about 0.63 m higher than its LTA value. The outflow at Jinghong station varied between 1,730.00 m³/s and 3,170.00 m³/s during 19-25 September 2023.
- With the fluctuated outflow from Jinghong upstream and rainfall at catchment inflow, water levels of monitoring stations at Chiang Saen in Thailand were decreased about 0.55 m from 19-25 September 2023, staying about 1.03 m lower than its LTA level. Water level at Xieng Kok upstream of Chiang Saen decreased about 0.82 m.
- Water level at Chiang Khan in Thailand from 19 to 25 September 2023 decreased about 0.55 m and stayed about 0.04 m higher than its LTA value, while water level at Vientiane decreased about 0.35 m staying about 0.83 higher than its LTA level. Water levels at Nong Khai decreased 0.19 m and stayed about 1.12 m lower than its LTA, while at Paksane it decreased about 0.47 m, staying about 1.28 m lower than its LTA value. Water levels at these stations are considered normal.
- Water levels from Nakhon Phanom to Pakse decreased from 0.72 m to 1.54 m, due to the contribution of low to moderate rainfalls and inflows from upstream. The current WLS at these stations are staying lower than their LTA value, considering low.
- From the stretches of the river at Stung Treng, water levels decreased about 0.1.26 m and stayed 0.25 m lower than its LTA values, while at Kratie the water levels decreased about 1.43 m and stayed 0.12 m higher than their LTA values, which were considered normal. Water level at Kompong Cham is about 0.68 m lower than its LTA value.
- The water volume of the Tonle Sap Lake was lower than its LTA (about 56%) during the same period from 19 to 25 September 2023, which is considered low.

- Water levels from downstream at Chaktomuk and Phnom Penh Port, Koh Khel on the Bassac river to Prek Kdam in Cambodia decreased between 0.09 m and 0.16 m, staying lower than their LTA level excepted at Kho Khel the water level is stayed also to its LTA level.
- The current water levels for most of the stations are lower than their LTA value. WLs at the 2 tidal stations at Tan Chau and Chau Doc were fluctuating and lower than their LTA value, due to tidal effect during this monitoring period, considered critical.
- Over the next five days, the water levels at the upper, middle and lower parts from Chiang Saen to Khong Chiam continue to go up due to moderate rainfall and dam operation upstream, while at downstream from Stung Treng down to the Mekong floodplain area they are going to drop.

Drought condition and its forecast

- During **Sep 18-24**, some moderate and severe meteorological droughts were detected in all four countries, mainly in the north and south of the region. They were taking place in some areas of **Ratana Kiri, Mondul Kiri, Kampong Cham, Prey Veng, Takeo, Kandal, Phongsaly, Luang Prabang, Bokeo, Xayaburi, Vientiane, Luangnamtha, Oudomxay, Savannakhet, Borikhamxay, Sekong, Attapeu, Chiang Mai, Chiang Rai, Payao, Loei, Nong Bua Lamphu, Chaiyaphum, Nakhon Ratchasima, Kon Tum, Dak Lak, An Giang, Tra Vinh, Ben Tre, and Kien Giang.**
- The three-month forecast shows that the LMB will likely experience moderate to severe dry conditions in the northern region and moderate drought in certain southern areas during September. Specifically, in September, moderate to severe droughts are anticipated in Xayaburi and Vientiane provinces, and moderate drought in Borikhamxay and Nakhon Phanom provinces in the north. In the southern part of the region, areas including Otdar Meanchey, Burirum, Surin, Si Saket, Champasack, Kampong Cham, Kien Giang, Ca Mau, and Bac Lieu are expected to experience moderate drought. Notably, Vientiane province is expected to face the most severe drought conditions by late September. October is likely wet in the north, eastern part and 3S area. While in November, moderate drought conditions are forecasted for certain areas of Vientiane, Chaiyaphum, as well as Sakon Nakhon provinces in the north, while the eastern and 3S areas of the region are expected to be relatively wet.

1 Introduction

This Weekly Wet Season Situation Report presents a preliminary analysis of the weekly hydrological and drought situation in the Lower Mekong River Basin (LMB) for the period from **12 to 18 September 2023**. The trend and outlook for water levels are also presented.

This analysis is based on the daily hydro-meteorological data provided by the Mekong River Commission (MRC) Member Countries (MCs) – Cambodia, Lao PDR, Thailand, and Viet Nam – and on satellite data. All the water levels indicated in this report refer to an above zero gauge of each station.

The report covers the following topics that are updated weekly:

- General weather patterns, including rainfall patterns over the LMB
- Water levels in the LMB, including in the Tonle Sap Lake
- Flash flood and drought situation in the LMB
- Weather, water level and flash flood forecast, and
- Possible implications.

Mekong River water levels are updated daily and can be accessed from:
http://ffw.mrcmekong.org/bulletin_wet.php.

Drought monitoring and forecasting information is available at:
<http://droughtforecast.mrcmekong.org>

Flash flood information is accessible at: <http://ffw.mrcmekong.org/ffg.php>

2 General Weather Patterns

The weather outlook bulletins for three months (August, September and October) and the weather maps issued by the Thai Meteorological Department (TMD) were used to verify weather conditions in the LMB.

Since the beginning of September 2023, moderate to heavy rainfall has dropped over the LMB with increasing trend of water levels in both mainstream and tributaries. The data from the TMD predict that between September and October 2023, moderate high-pressure system from China will extend to upper Thailand and the East-Sea of Viet Nam. Moderate to heavy rains, strong wind and increasing temperature are likely to take place in the upper part of LMB. Temperature will increase in the northeast and then move to other places of the region in August. The monsoon trough lies across the LMB throughout the period with rainfall and isolated heavy rains in the upper and middle parts from Chaing Saen to Pakse.

[Figure 1](#) presents the weather map during 18-24 September 2023, indicating that a low-pressure cell was active in the East-Sea of Viet Nam, having rainfall impact on the LMB area. Generally, the Mekong region was influenced by the southwest monsoon and active low-pressure band of ITCZ over LMB region with active low-pressure cell over east sea Viet Nam. Under this weather condition, moderate to heavy rainfall occurred from central to southern parts of LMB, especially over southern part of Lao PDR, eastern part of Thailand in LMB, the 3S area, central to southern parts of Cambodia, and central to southern highlands of Viet Nam.

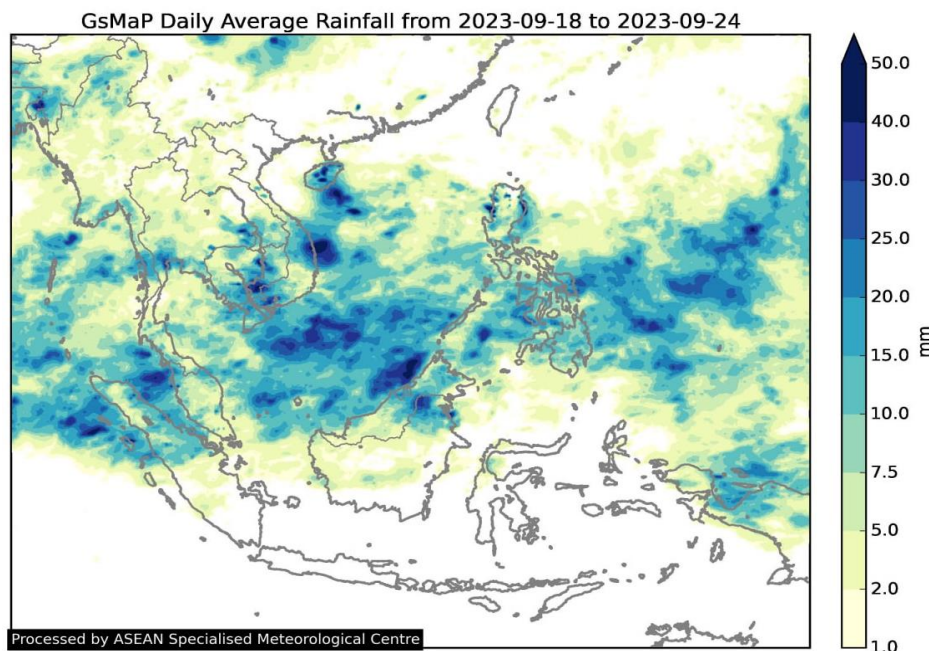


Figure 1. Summary of weather conditions over the LMB.

According to the ASEAN Specialised Meteorological Centre (ASMC), the highest probability of wet and warm condition is predicted over the lower part of the Mekong region from 18 September to 01 October 2023. Therefore, the Mekong region is likely dominated by wet and warm conditions, which may bring moderate rainfall and warm temperatures in general to the upper and lower parts of the LMB. **Figure 2** shows the outlook of weather condition from 18 September to 01 October 2023 in Southeast Asia based on results from the NCEP model (National Centres for Environmental Prediction).

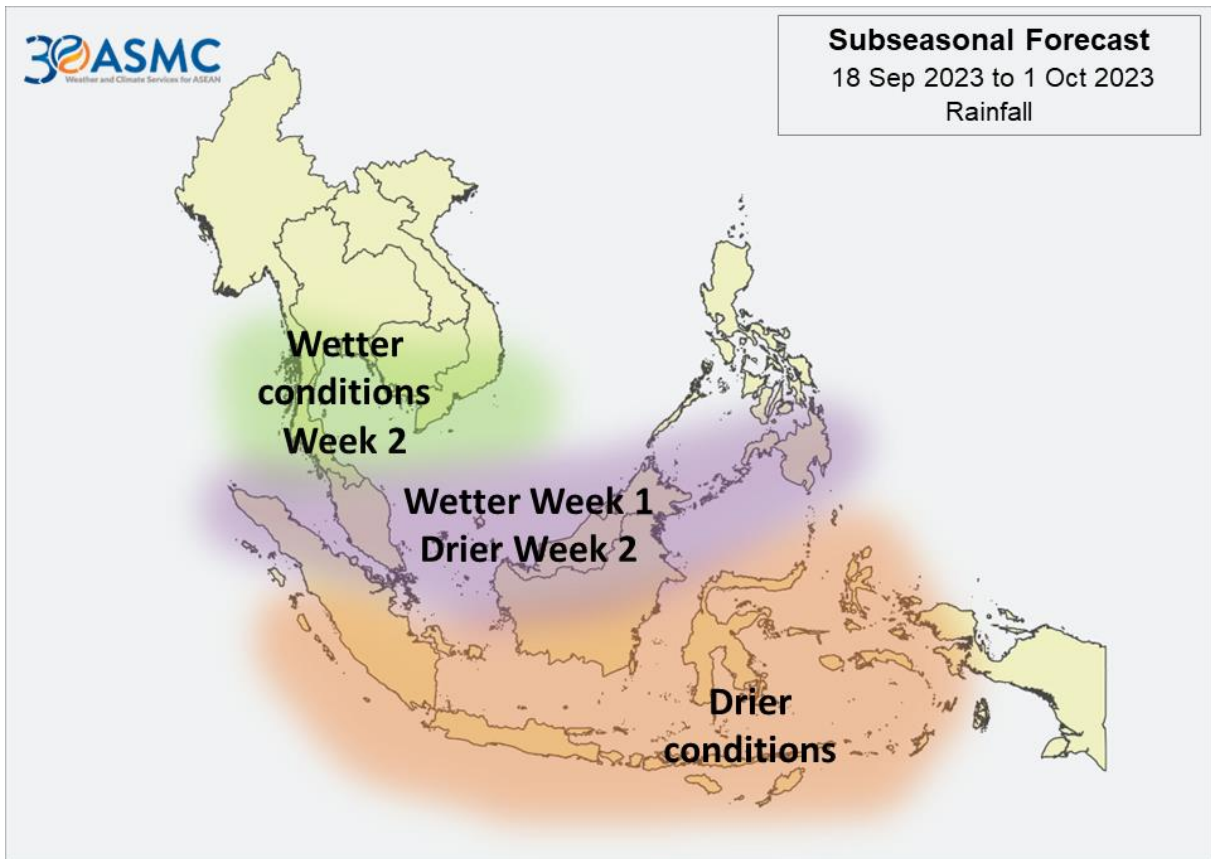


Figure 2. Outlook of wet and dry conditions over the Asian countries by ASMC.

2.1 Tropical depressions (TD), tropical storms (TS) and typhoons (TY)

There was no movement of any storm from the sea to the LMB during 19-25 September 2023. No low-pressure line was observed over the Mekong region as shown in [Figure 1](#). The active system for the LMB on September 25 is displayed in [Figure 3](#).

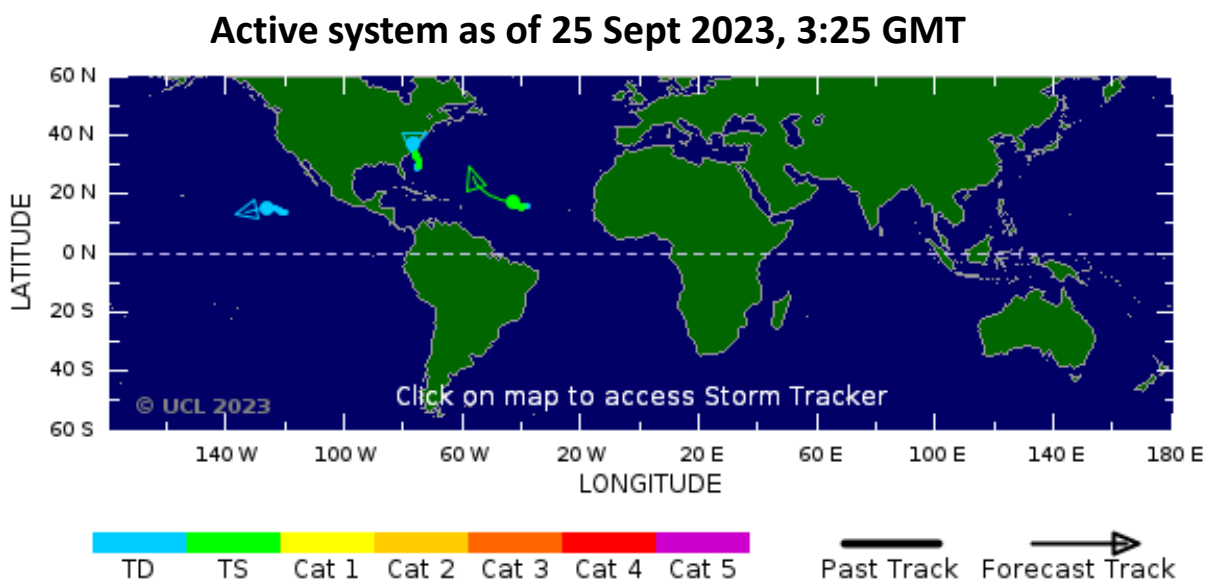


Figure 3. A tropical depression risk observed on 25 Sep 2023.

2.2 Rainfall patterns over the LMB

This week from 19 to 25 Sept 2023, rainfall was observed at the key stations along the mainstream from Chiang Saen in Thailand to the lower part stations in Cambodia and Tan Chau and Chau Doc in Viet Nam of the Lower Mekong Basin, varied from 2.00 mm to 142.60 mm. The highest rainfall of this week report was recorded at Neak Luong in Cambodia reaching 142.60 mm. The total rainfall of this week report in the Mekong region, compared with last week and its long-term-average (LTA) is shown in [Figure 4](#). The total rainfall of this week was considered low in the lower part of the LMB, compared with its last week rainfall in most of the stations.

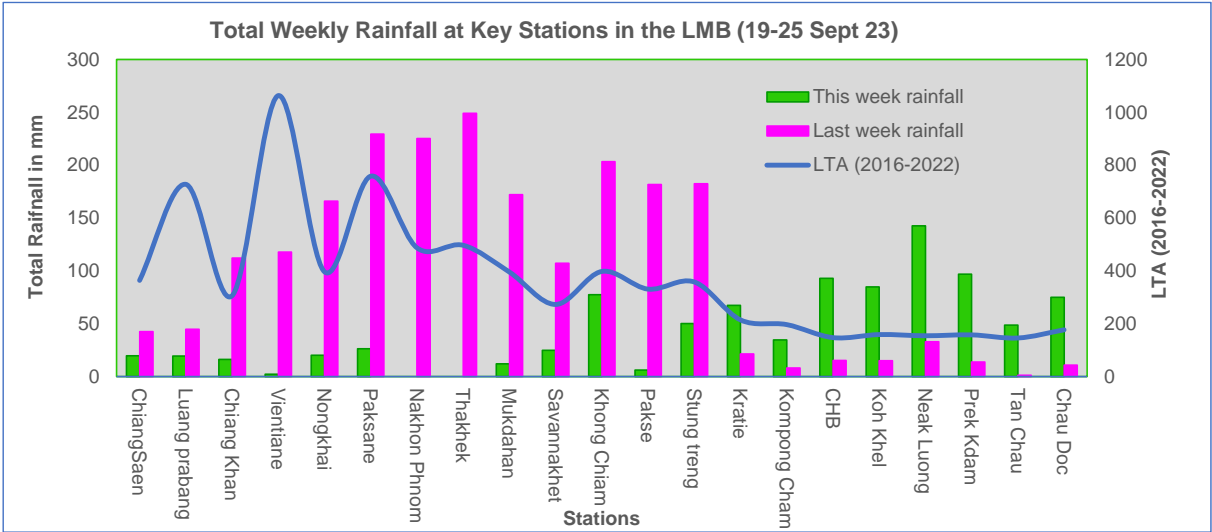


Figure 4. Weekly total rainfall at key stations in the LMB during 19-25 Sep 2023.

To verify area rainfall distribution, [Figure 5](#) shows a map of the weekly accumulated rainfall based on observed data provided by the MRC Member Countries – Cambodia, Lao PDR, Thailand, and Viet Nam – from 19 to 25 September 2023.

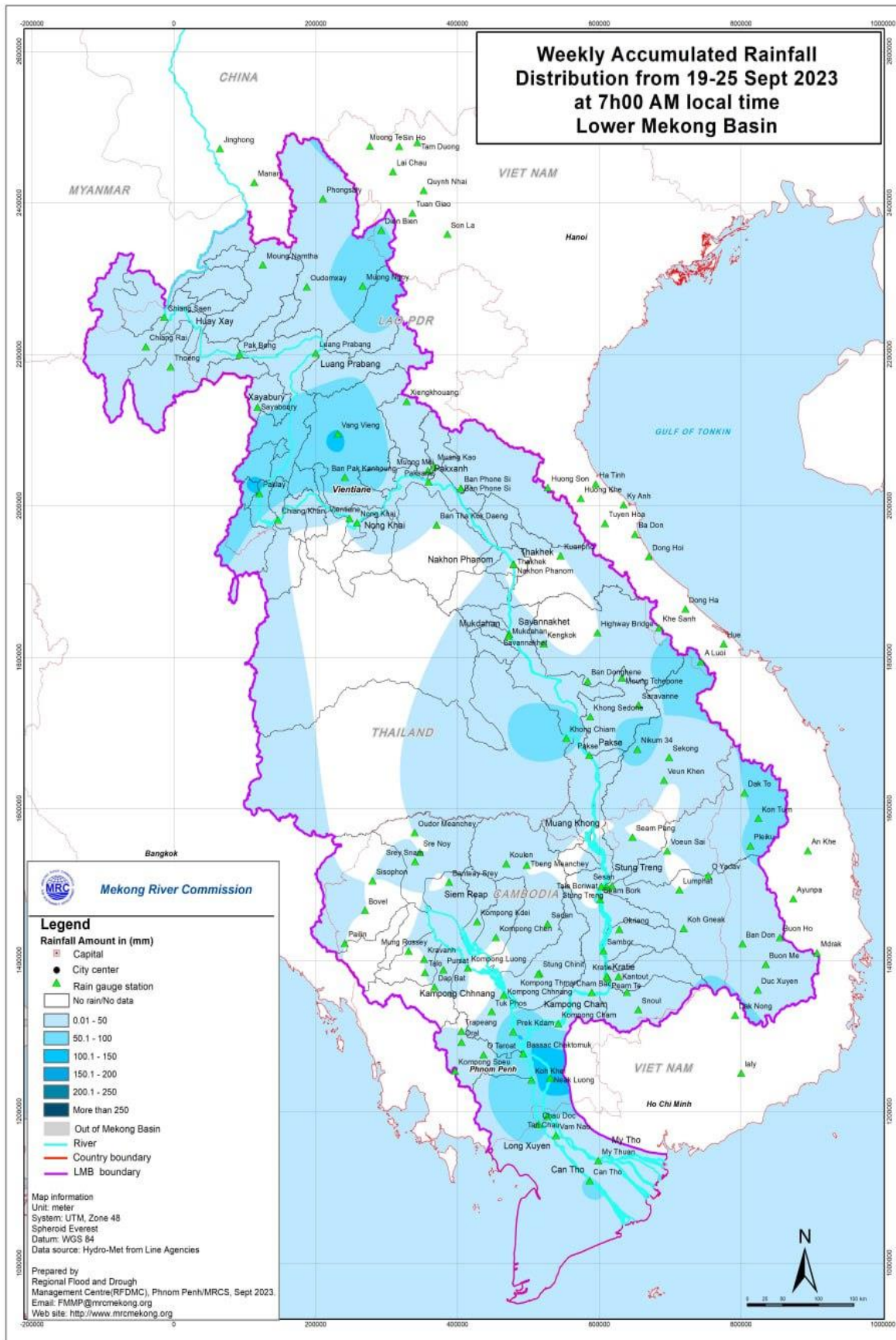


Figure 5. Weekly rainfall distribution over the LMB during 19-25 Sep 2023.

3 Water Levels in the Lower Mekong Basin

The hydrological regimes of the Mekong mainstream are illustrated by recorded water levels and flows at key mainstream stations: at Chiang Saen in Thailand to capture mainstream flows entering from the Upper Mekong Basin (UMB); at Vientiane in Lao PDR to present flows generated by climate conditions in the upper part of the LMB; at Pakse in Lao PDR to investigate flows influenced by inflows from the larger Mekong tributaries; at Kratie in Cambodia to capture overall flows of the Mekong Basin; and at Viet Nam’s Tan Chau and Chau Doc to monitor flows to the Delta.

The key stations along the LMB and their respective model application for River Flood Forecasting during the wet season from June to October and River Monitoring during the dry season from November to May are presented in [Figure 6](#). The hydrograph for each key station is available from the MRC’s River Flood Forecasting: <http://ffw.mrcmekong.org/overview.php>. The weekly water levels and rainfall at each key station are summarised in [Annex A](#).

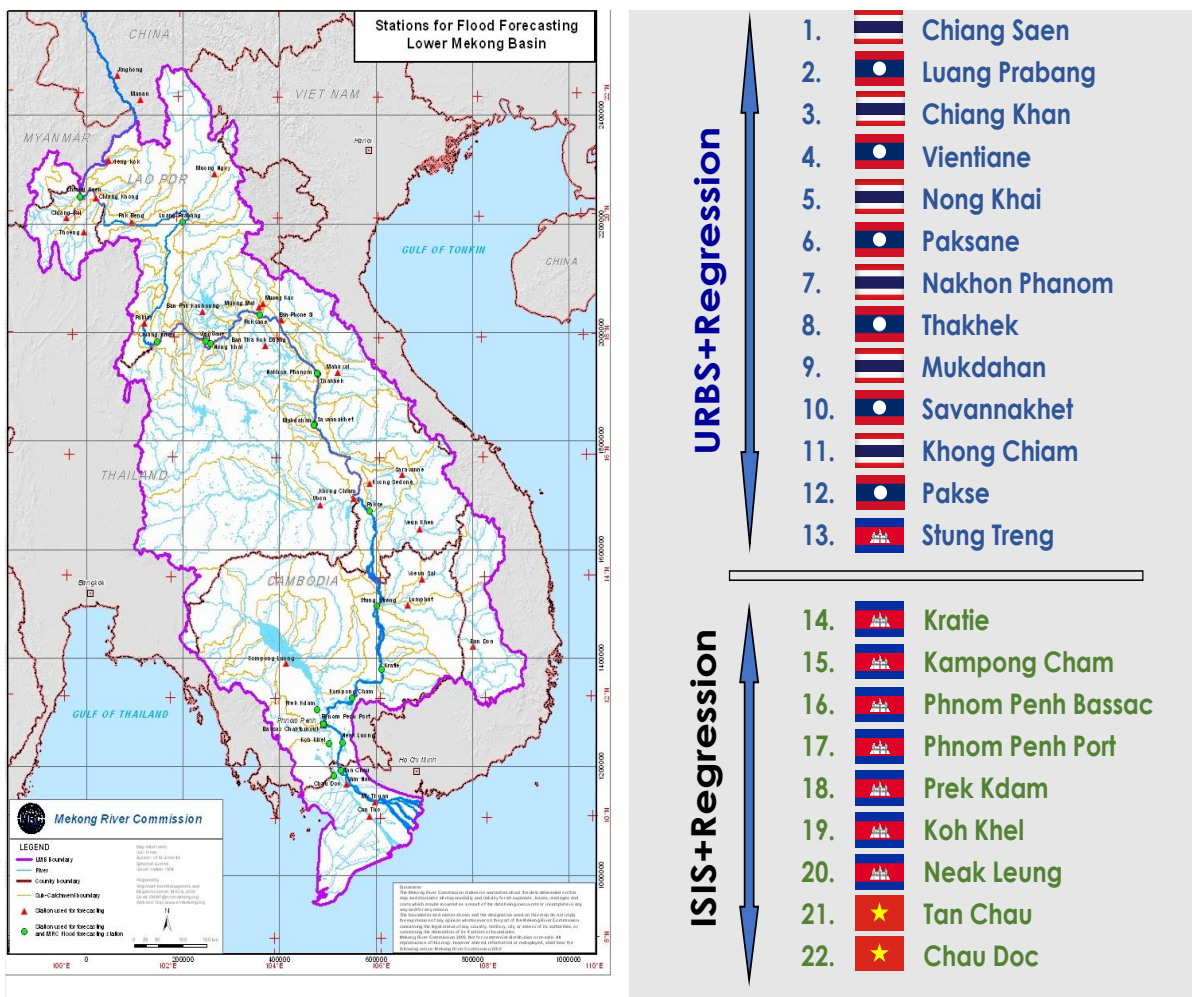


Figure 6. Key stations and model application for River Monitoring and Flood Forecasting.

According to MRC’s observed water level at Jinghong, it showed fluctuated levels between **536.48 m** and **538.15 m** during 19-25 September 2023 (recorded on 7:00 am). The current level is staying about 0.63 m higher than its LTA value (max: 2015-2022). The outflow at Jinghong station varied between 1,730.00 m³/s and 3,170.00 m³/s from 19 to 25 September 2023. [Figure 7](#) below presents water level that decreased level at the Jinghong hydrological station¹, indicating the trend of fluctuating water level up to 25 September 2023.

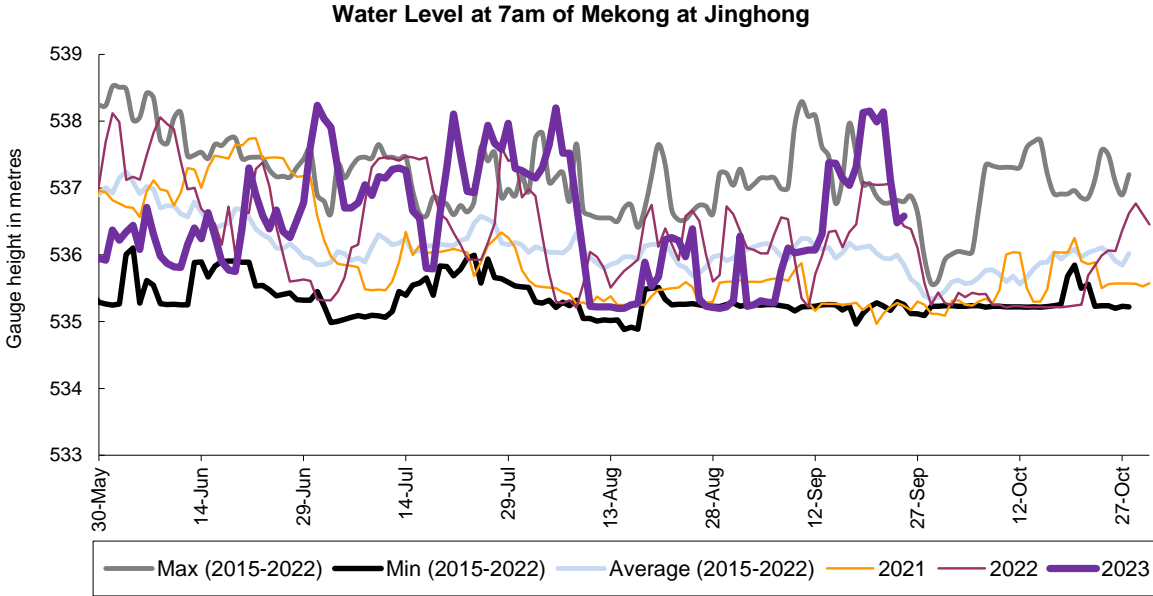


Figure 7. Water level at the Jinghong hydrological station up to 25 Sep 2023.

With the fluctuated outflow from Jinghong upstream, water levels of monitoring stations at Xieng Kok in Lao PDR, upper of Chiang Saen, showed the decreased water level about 0.82 m; while at Chiang Saen in Thailand it showed a decrease of about 0.13 m from 19 to 25 September 2023, staying about 1.03 m lower than its LTA level and still considered low.

Water level at Chiang Khan in Thailand from 19 to 25 September 2023, moreover, decreased about 0.55 m but still stayed about 0.04 m higher than its LTA value; while water level at Vientiane station decreased about 0.35 m and stayed about 0.83 higher than its LTA level, which was **considered normal**. Water levels at Nong Khai also decreased about 0.19 m, staying 1.12 m lower than its LTA value. For Paksane it decreased about 0.47 m due to impacted rainfall and hydropower operation from upstream, staying about 1.28 m lower than their LTA value, **which was still considered low**.

Water levels from Nakhon Phanom in Thailand to Pakse in Lao PDR significantly decreased between 0.72 m and 1.54 m, resulting wate levels at those stations were stayed lower than their LTA values, **considered low**. From the stretches of the river at Stung Treng, WL rapidly decreased 1.26 m and stayed about 0.25 m lower than its LTA, while at Kratie water level was down about 1.23 m, staying 0.12 m higher than its LTA level, **considered normal**.

¹ Near-real time data of hydro-meteorological monitoring at the Jinghong hydrological station is available at <https://portal.mrcmekong.org/monitoring/river-monitoring-telemetry>.

Water level at Kompong Cham was down about 0.56 m and stayed 0.68 m lower than its LTA value. Water levels at Chaktomuk, Koh Khel and Phnom Penh Port in Cambodia fall about 0.10 m, excepted at and at Neak Luong and Prek Kdam increased about 0.12 m. Water levels at these stations were still lower than their LTA level, **considered low**.

Water levels at most of the stations along the Mekong River were staying lower than their LTA values, excepted at stations from Khong Chaim in Thailand to Kratie in Cambodia, during this week report. The tidal stations at Tan Chua and Chau Doc had WLS lower than their LTA value, due to tidal effect during this monitoring period.

Based on hydrological phenomenon, the contribution of inflow water from the upstream of Lancang-Mekong in China to the Mekong mainstream is from 16% to 18% in total during the wet season from June to October. The whole inflow of water into the LMB is influenced by rainfall at the Mekong mainstream and its tributaries during the wet season.

Chiang Saen and Luang Prabang

The water level from 19 to 25 September 2023 at Thailand’s Chiang Saen station decreased from 4.11 m to 3.98 m, showing 1.03 m lower than its Long-Term-Average (LTA) value, which considered low. The water level at Luang Prabang station in Lao PDR increased about 0.56 m during the reporting period. This level shows 0.18 higher than its LTA. The trend – sometimes higher or lower to its historical maximum and LTA values – has been observed since early of 2022. The phenomenon was potentially caused by upstream dam operations, downstream Xayaburi dam, and heavy rainfall in the surrounding areas. The water levels at Chiang Saen and Luang Prabang are shown in [Figure 8](#) below.

Being situated between the upstream (Nam Beng, Nam Ou, Nam Suong, and Nam Khan) and downstream (Xayaburi) hydropower dams, the Luang Prabang station has a unique characteristic as it is influenced by the operations of all its surrounding dams. **Thus, the water level at this station can possibly change very rapidly during the early of wet and dry season.**

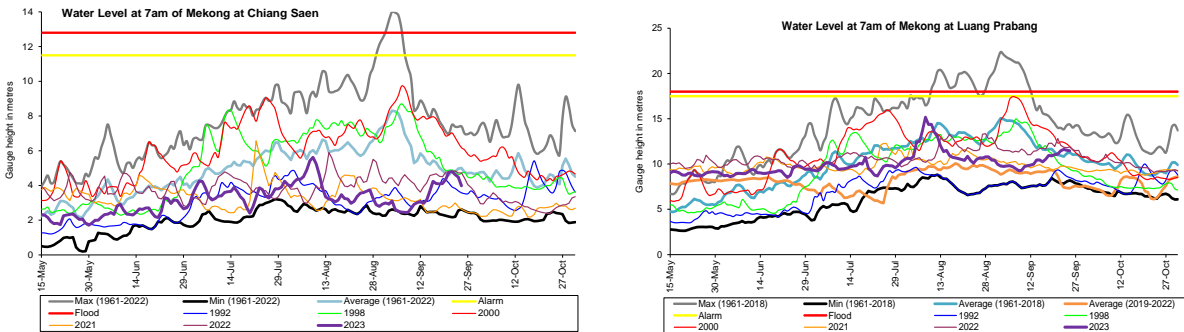


Figure 8. Water levels at Chiang Saen in Thailand and Luang Prabang in Lao PDR.

Chiang Khan, Vientiane-Nong Khai and Paksane

The water level at Chiang Khan in Thailand (downstream of the Xayaburi dam) decreased about 0.55 m and still staying about 0.04 m higher than its LTA value. At Vientiane in Lao PDR, it decreased about 0.35 m and showed 0.83 m higher than its LTA during the reporting week of 19-25 September 2023. At Nong Khai station in Thailand, the water level was down about

0.19 m from 7.34 m to 7.15 m, staying about 1.12 m lower than its LTA value, during the reporting period. At Paksane in Lao PDR, water level was decreased about 0.47 m on the same period of the report. The water level at this station was about 1.28 m lower than its LTA value. The recently decreased water levels at Paksane were obviously due to below-average rainfalls contributed from the sub-catchment area along with the inflows and reservoir operation in the upstream part. The water levels at Vientiane and Paksane are shown in [Figure 9](#) below.

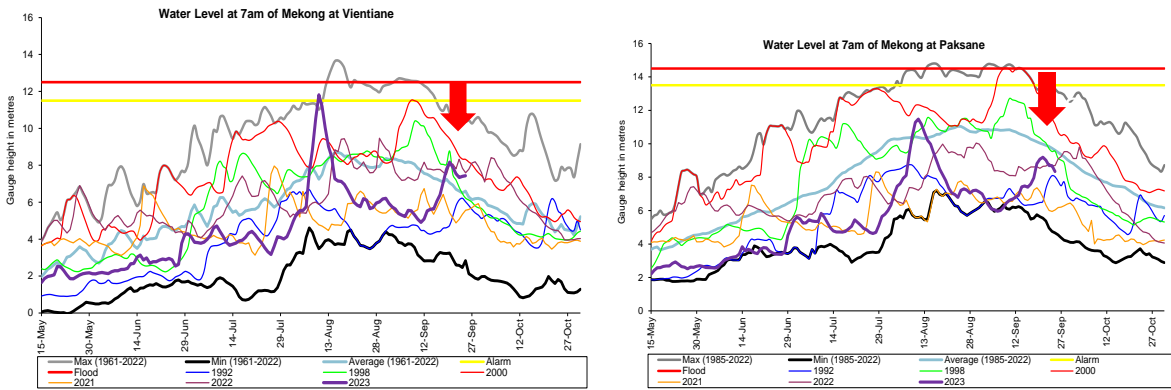


Figure 9. Water levels Veintiane and Paksane in Lao PDR.

Nakhon Phanom to Pakse

The water levels from Nakhon Phanom in Thailand to Pakse in Lao PDR decreased between 0.72 m and 1.54 m, resulting water levels at these were about 0.20 m and 1.10 m lower than their LTA values. Water levels at other stations are still about 0.50 m lower than their LTA value, which considered normal. [Figure 10](#) shows the water levels at Nakhon Phanom and Pakse stations.

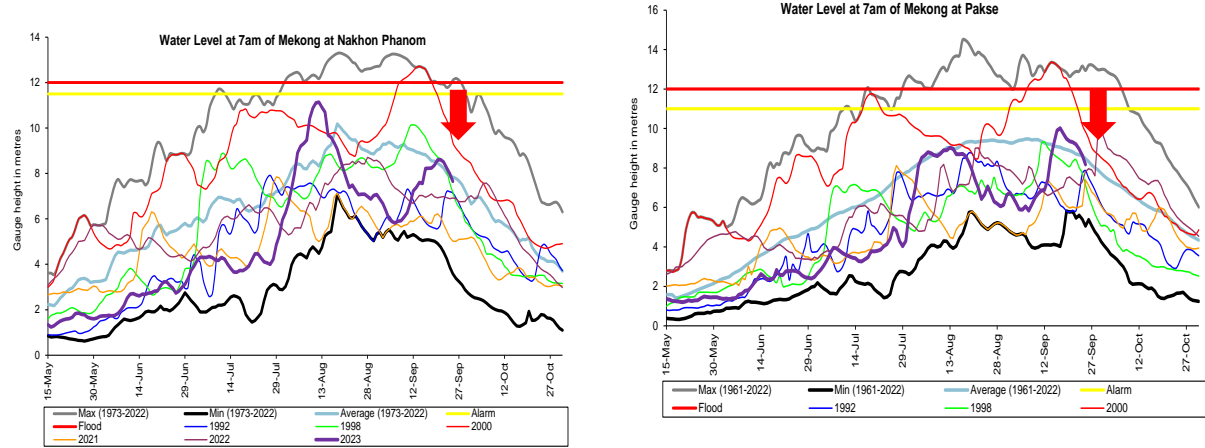


Figure 10. Weekly water levels at Nakhon Phanom in Thailand and Pakse in Lao PDR

Stung Treng to Kompong Cham/Phnom Penh to Koh Khel/Neak Luong/Prek Kdam

Following the same trend and rainfall from the upstream part of the Mekong River and the 3S river (Sekong, Se San, and Sre Pok), the water levels from Stung Treng to Kratie in Cambodia were significantly decreasing during 19-25 September 2023. The water levels at Stung Treng decreased about 1.26 m and stayed about 0.25 m lower than its LTA, while at Kratie it decreased about 1.43 m, staying about 0.12 m higher than its LTA (as showed in [Figure 11](#)). The water level at Kompong Cham station decreased about 0.56 m and was about 0.68 m lower than its LTA. The water levels at these stations were influenced by rainfall in their catchment areas, including Sekong, Se San and Srepok river basins.

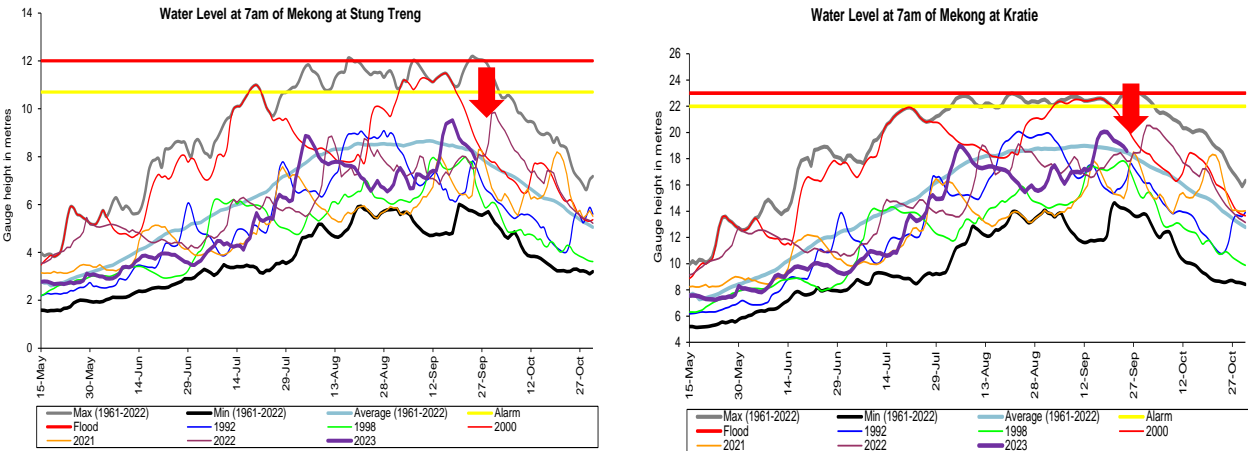


Figure 11. Water levels at Stung Treng and Kratie on the Mekong River.

At Chaktomuk on the Bassac River, due to below-average rainfall and contributed flows from upstream catchment, the water level decreased by about 0.16 m and stayed 1.49 m lower than its LTA value; while at Koh Khel, water level decreased about 0.09 m, staying 0.16 m lower than its LTA value. The water level at Prek Kdam on the Tonle Sap Lake increased about 0.14 m and was about 1.48 m lower than its LTA value. The water level at the Tonle Sap Lake (observed at Kampong Luong) was similar to Prek Kdam station’s water level. The recently increased water level at Prek Kdam was due to moderate rainfall and inflow contributed from upstream of the Tonle Sap Lake area during the reporting period. The water level at the Tonle Sap Lake (observed at Kampong Luong) followed the same trend of Prek Kdam station’s water level. From next week, **water levels at most of the stations will rise and is considered normal.**

Tidal stations at Tan Chau and Chau Doc

Like last week, the water levels from 19 to 25 September 2023 at Viet Nam’s Tan Chau and Chau Doc were fluctuating due to daily tidal effects from the sea. The fluctuation levels were between 1.96 m and 2.57 m; they were below the range of their LTA level and were **considered normal.**

The Tonle Sap Flow

At the end of the dry season, when water levels along the Mekong River rise then the inflows of the Mekong River return to the Tonle Sap Lake. This phenomenon normally takes place from end of May to July. Based on flow observation at Prek Kdam, the reversed flow from the Mekong River into the Tonle Sap began between 06 and 10 July 2023.

The flows of the Tonle Sap Lake were calculated based on a formula of rating-curves by different water levels at Kompong Luong and Phnom Penh Port for slop and Prek Kdam as cross-section of the Lake. The formula of flows at the Tonle Sap Lake is as follows:

$$Flows = (WL \text{ at Prek Kdam})^{1.2} * SQRT (WL \text{ difference between PP port and Kampong Luong})$$

Where, WL is water level in m (msl).

Figure 12 shows the seasonal changes of the outflow and the inflow/reversed flow of the TSL at Prek Kdam in comparison with the flows of 2020, 2011, 2022 and their LTA level (1997-2022). Up to September 25 of this reporting period, it was observed that the main outflow from the Tonle Sap Lake increased due to moderate rainfall and inflows from upstream. This increased inflow into the Tonle Sap Lake was most likely caused by inflows and rainfall from the catchment area. Up to present, the inflow from the Tonle Sap Lake condition in 2023 is higher than 2020, 2021 and 2022 which close to its LTA (1997-2022) inflow conditions. For next week, moderate rainfall is forecasted for the Tonle Sap area; and the inflow into the Tonle Sap Lake is likely expected to go up from the current level.

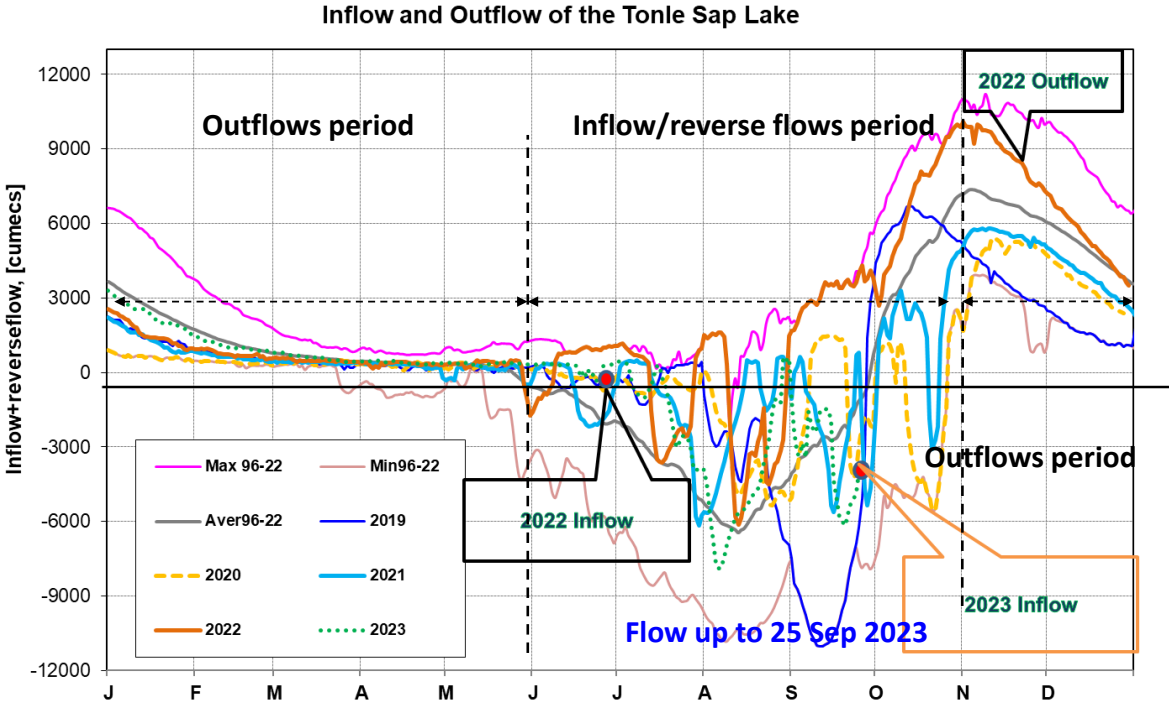


Figure 12. Seasonal change of inflows and outflows of Tonle Sap Lake

[Figure 13](#) shows seasonal changes in monthly flow volumes up to 25 September 2023 for the Lake compared with the volumes in 2020, 2021, 2022 and their LTA, and the fluctuation levels (1997–2022). It shows that up to September 25, **the water volume of the Tonle Sap Lake was higher than 2020, 2021, 2022 and stayed lower than its LTA (about 56%), during the same period.** The figure is displayed in [Table 1](#), which indicates that the Tonle Sap Lake has been affected by water levels from the tributaries and rainfall in the surrounding sub-catchments and **considered normal situation.**

This demonstrates the influence of the relationships of the reverse and out flows, water levels of the Mekong River, inflows from tributaries, and the flow direction in the complex hydraulic environment of the Tonle Sap Lake during the wet and dry seasons. The data show that about half of the annual inflow volume into the Tonle Sap Lake has originated from the Mekong mainstream. Thus, flow alterations in the mainstream could have direct impact on the Tonle Sap Lake water levels and on its hydrology.

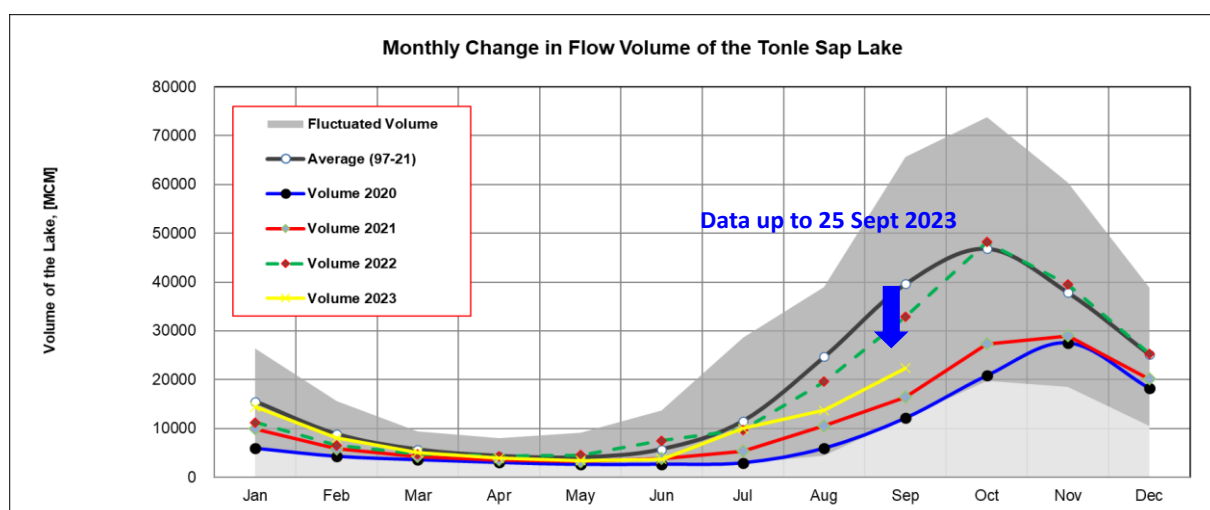


Figure 13. The seasonal change in monthly flow volume of Tonle Sap Lake.

Table 1. The monthly change in the flow volume of Tonle Sap Lake.

Month	LTA (97-22) [MCM]	Max Volume [MCM]	Min Volume [MCM]	Volume 2019 [MCM]	Volume 2020 [MCM]	Volume 2021 [MCM]	Volume 2022 [MCM]	Volume 2023 [MCM]	Volume in 2023 [%], compared with its LTA
Jan	15523.23	26357.53	5906.80	10285.31	5906.80	9923.80	11214.32	14422.11	92.91
Feb	8837.89	15596.22	4198.60	6019.30	4264.19	5832.97	6558.79	8069.29	91.30
Mar	5654.18	9438.24	3347.07	4354.62	3553.99	4264.88	4736.52	5080.64	89.86
Apr	4346.65	8009.14	2866.91	3667.47	2992.61	3556.68	4288.31	3884.16	89.36
May	4030.23	9176.93	2417.81	3266.43	2594.92	3240.78	4556.83	3438.66	85.32
Jun	5708.30	13635.01	2468.70	3517.06	2641.88	3798.29	7489.04	3689.97	64.64
Jul	11493.25	28599.56	2925.86	4001.99	2925.86	5346.73	9703.79	9953.41	86.60
Aug	24666.69	39015.12	4433.46	7622.71	5941.07	10547.80	19554.70	13694.57	55.52
Sep	39634.03	65632.35	12105.31	24194.19	12105.31	16382.34	32860.34	22339.57	56.36
Oct	46873.44	73757.23	19705.50	30358.38	20799.13	27318.21	48199.12		
Nov	37823.16	60367.33	18534.61	19112.65	27546.80	28982.93	39452.53		
Dec	25126.11	38888.95	10563.49	10577.29	18251.65	20170.76	25346.65		
	Critical situation, compared with historical Min values								
	Normal condition, compared with LTA (Long term average)								
	Low volume situation, compared with LTA values								
Unit: Million Cubic Meter (1 MCM= 0.001 Km ³)				LTA: Long-Term-Average					

4 Flash Flood in the Lower Mekong Basin

During the weekly monitoring period from 19 to 25 September, the LMB received from moderate to very heavy rain and isolated thundershowers in some areas.

According to the MRC-Flash Flood Guidance System (MRC-FFGS) and analysis, low to high risk of flash flood events were detected during the reporting period in some area of Lao PDR, Cambodia, Thailand, and Viet Nam as shown in [Figure 14](#) and [Table 2](#).

Table 2. Detected low-risk flash flood in the LMB during 19 to 25 September.

Rate-risk and location of the flash flood may occur in the next 1, 3, and 6 hours in Lao PDR														
Date of FFG products 25/09/2023 6:00 UTC time														
01-Hour Flash Flood Risk and Location					03-Hour Flash Flood Risk and Location					06-Hour Flash Flood Risk and Location				
Provinces	Districts	Villages	Region	Level Risk	Provinces	Districts	Villages	Region	Level Risk	Provinces	Districts	Villages	Region	Level Risk
Saravane	Ta oi		Northwest	Low-Risk	Saravane	Ta oi		Northwest	Low-Risk	Saravane	Ta oi		Northwest	Low-Risk
Sekong	Kaleum		Northwest	Low-Risk	Sekong	Kaleum		Northwest	Low-Risk	Champasak	Paksong		Northwest	Low-Risk
Sekong	Kaleum		Northwest	Low-Risk	Sekong	Kaleum		Northwest	Low-Risk	Sekong	Kaleum	TOUNG S	Northwest	Low-Risk
Saravane	Ta oi		Northwest	Low-Risk	Sekong	Kaleum		Northwest	Moderate-Risk	Sekong	Kaleum		Northwest	Low-Risk
Sekong	Kaleum		Northwest	Low-Risk	Sekong	Kaleum		Northwest	Moderate-Risk	Sekong	Kaleum		Northwest	Low-Risk
Saravane	Ta oi		Northwest	Low-Risk	Sekong	Kaleum		Northwest	Low-Risk	Sekong	Kaleum		Northwest	Low-Risk
Sekong	Kaleum		Northwest	High-Risk	Sekong	Kaleum	AR-LANG	Northwest	Low-Risk	Saravane	Ta oi		Northwest	Low-Risk
Sekong	Kaleum		Northwest	Low-Risk	Sekong	Kaleum	XEU	Northwest	Low-Risk	Sekong	Kaleum		Northwest	Moderate-Risk
Sekong	Kaleum		Northwest	Low-Risk	Sekong	Kaleum	TAHIT	Northwest	Moderate-Risk	Sekong	Kaleum		Northwest	Low-Risk
Sekong	Kaleum		Northwest	High-Risk	Sekong	Kaleum	PUEBYAI	Northwest	Low-Risk	Sekong	Kaleum		Northwest	Low-Risk
Sekong	Kaleum		Northwest	Low-Risk	Sekong	Kaleum	SONGKHORN	Northwest	Low-Risk	Sekong	Kaleum		Northwest	Moderate-Risk
Sekong	Kaleum	AR-LANG	Northwest	Moderate-Risk	Sekong	Kaleum	HANONG NEUA	Northwest	Low-Risk	Sekong	Kaleum		Northwest	Low-Risk
Sekong	Kaleum	XEU	Northwest	Low-Risk	Sekong	Lamarm		Northwest	Low-Risk	Sekong	Kaleum	AR-LANG	Northwest	Moderate-Risk
Sekong	Kaleum	TAHIT	Northwest	Moderate-Risk	Attapeu	Sanxay	VANGSANG	Northwest	Low-Risk	Sekong	Kaleum	XEU	Northwest	Low-Risk
Sekong	Kaleum	PUEBYAI	Northwest	Low-Risk	Sekong	Dakcheung		Northwest	Low-Risk	Sekong	Kaleum	TAHIT	Northwest	Moderate-Risk
Sekong	Kaleum	SONGKHORN	Northwest	Low-Risk	Sekong	Dakcheung	NGONBAN	Northwest	Low-Risk	Sekong	Kaleum	PUEBYAI	Northwest	Low-Risk
Sekong	Kaleum	HANONG NEUA	Northwest	Low-Risk	Attapeu	Sanxay		Northwest	Low-Risk	Sekong	Kaleum	LONOI	Northwest	Low-Risk
Sekong	Lamarm		Northwest	Low-Risk	Attapeu	Sanxay	YIENGDAAK	Northwest	Low-Risk	Sekong	Kaleum	SONGKHORN	Northwest	Low-Risk
Attapeu	Sanxay	VANGSANG	Northwest	Low-Risk	Attapeu	Sanxay	DORNKHAEN	Northwest	Low-Risk	Sekong	Kaleum	HANONG NEUA	Northwest	Low-Risk
Sekong	Dakcheung	DAKKE	Northwest	Low-Risk	Attapeu	Sanxay		Northwest	Low-Risk	Sekong	Lamarm		Northwest	Low-Risk
Sekong	Dakcheung		Northwest	Low-Risk	Sekong	Dakcheung		Northwest	Low-Risk	Sekong	Kaleum	TAVUE	Northwest	Low-Risk
Sekong	Dakcheung	NGONBAN	Northwest	Low-Risk	Sekong	Kaleum		Northwest	Low-Risk	Attapeu	Sanxay	DAKYUEN	Northwest	Low-Risk

Rate-risk and location of the flash flood may occur in the next 1, 3, and 6 hours in Viet Nam														
Date of FFG products 25/09/2023 6:00 UTC time														
01-Hour Flash Flood Risk and Location					3-Hour Flash Flood Risk and Location in Vietnam					6-Hour Flash Flood Risk and Location in Vietnam				
Provinces	Districts	Region	Level Risks	Provinces	Districts	Region	Level Risks	Provinces	Districts	Region	Level Risks			
Thua Thien Hue	A Luoi	Northeast	Low-Risk	Thua Thien Hue	Phong Dien	Northeast	Low-Risk	Gia Lai	la Grai	Northeast	Low-Risk			
Thua Thien Hue	Phong Dien	Northeast	Moderate-Risk	Thua Thien Hue	A Luoi	Northeast	Moderate-Risk	Kon Tum	Ngoc Hoi	Northeast	Low-Risk			
Thua Thien Hue	A Luoi	Northeast	High-Risk	Quang Nam	Hien	Northeast	High-Risk	Quang Tri	Hung Hoa	Northeast	Low-Risk			
Thua Thien Hue	Nam Dong	Northeast	Low-Risk	Quang Nam	Hien	Northeast	Low-Risk	Thua Thien Hue	A Luoi	Northeast	Low-Risk			
Thua Thien Hue	A Luoi	Northeast	Moderate-Risk	Da Nang	Hoa Vang	Northeast	Low-Risk	Thua Thien Hue	Phong Dien	Northeast	Moderate-Risk			
Quang Nam	Hien	Northeast	High-Risk	Kon Tum	Dak To	Northeast	Low-Risk	Thua Thien Hue	A Luoi	Northeast	Moderate-Risk			
Thua Thien Hue	Nam Dong	Northeast	Low-Risk	Kon Tum	Dak Glei	Northeast	Moderate-Risk	Thua Thien Hue	Nam Dong	Northeast	Low-Risk			
Quang Nam	Hien	Northeast	Moderate-Risk	Quang Nam	Tra My	Northeast	Low-Risk	Thua Thien Hue	A Luoi	Northeast	Low-Risk			
Da Nang	Hoa Vang	Northeast	Low-Risk	Kon Tum	Dak Glei	Northeast	Low-Risk	Quang Nam	Hien	Northeast	Moderate-Risk			
Quang Nam	Nam Giang	Northeast	Low-Risk	Kon Tum	Dak To	Northeast	Low-Risk	Thua Thien Hue	Nam Dong	Northeast	Low-Risk			
Kon Tum	Dak To	Northeast	Moderate-Risk	Quang Ngai	Tra Bong	Northeast	Low-Risk	Da Nang	Hoa Vang	Northeast	Low-Risk			
Kon Tum	Dak Glei	Northeast	Moderate-Risk	Quang Nam	Tra My	Northeast	Low-Risk	Da Nang	Hoa Vang	Northeast	Low-Risk			
Kon Tum	Dak Glei	Northeast	Moderate-Risk	Quang Ngai	Son Ha	Northeast	Low-Risk	Quang Nam	Hien	Northeast	Low-Risk			
Quang Nam	Phuoc Son	Northeast	Low-Risk	Quang Ngai	Son Tay	Northeast	Low-Risk	Quang Nam	Dai Loc	Northeast	Low-Risk			
Quang Nam	Tra My	Northeast	Low-Risk	Quang Ngai	Tra Bong	Northeast	Low-Risk	Quang Nam	Nam Giang	Northeast	Low-Risk			
Kon Tum	Dak Glei	Northeast	Moderate-Risk	Quang Ngai	Son Tay	Northeast	Low-Risk	Kon Tum	Dak Glei	Northeast	Low-Risk			
Kon Tum	Kon Plong	Northeast	Low-Risk	Kon Tum	Kon Plong	Northeast	Low-Risk	Kon Tum	Dak To	Northeast	Moderate-Risk			
Kon Tum	Dak To	Northeast	Moderate-Risk	Quang Ngai	Ba To	Northeast	Low-Risk	Kon Tum	Dak Glei	Northeast	Moderate-Risk			
Kon Tum	Dak To	Northeast	Low-Risk	Quang Ngai	Minh Long	Northeast	Low-Risk	Quang Nam	Nam Giang	Northeast	Low-Risk			
Quang Ngai	Tra Bong	Northeast	Moderate-Risk	Binh Dinh	Phu Cat	Northeast	Moderate-Risk	Quang Nam	Phuoc Son	Northeast	Low-Risk			

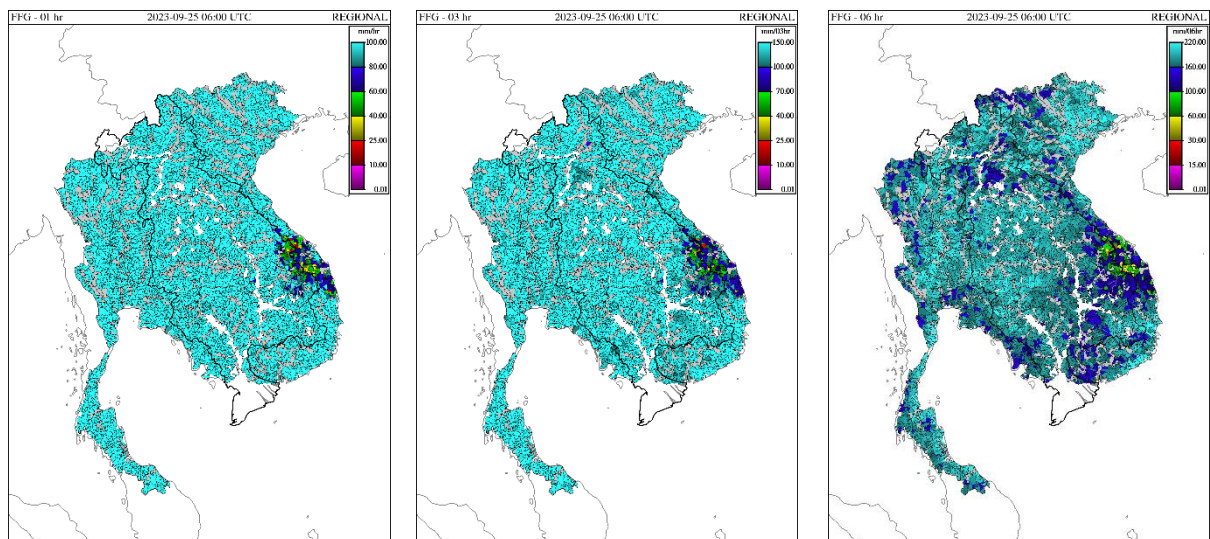


Figure 14. Flash Flood Guidance for the next 1-hr, 3-hr and 6-hr on September 25

5 Drought Monitoring in the Lower Mekong Basin

Weekly drought monitoring from 18 to 24 September 2023

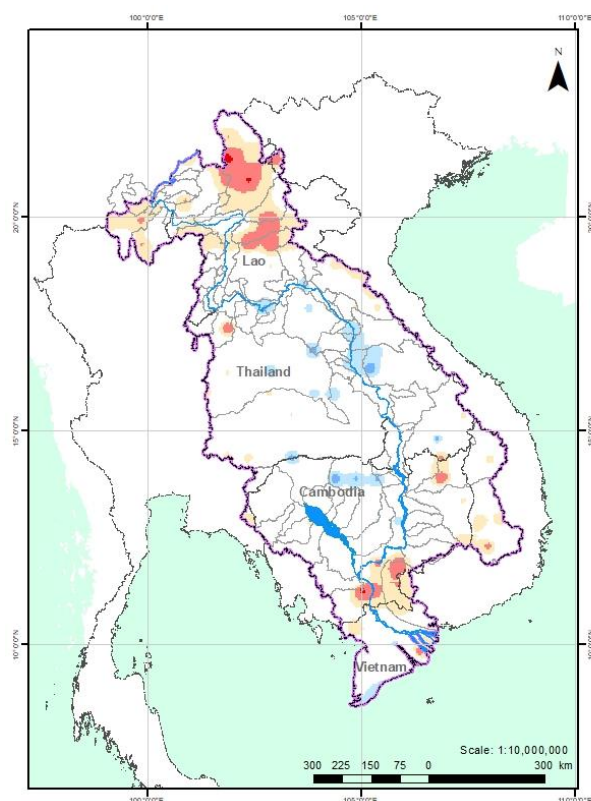
Drought monitoring data in 2023 are available from Monday to Sunday every week; thus, the reporting period is normally delayed by two days compared to Flood and Flash Flood reports. We adopt the Index of Soil Water Fraction (ISWF) data obtained from FFGS to represent soil moisture of agricultural indicator for both dry and wet seasons.

- Weekly Standardised Precipitation Index (SPI1)**

The meteorological drought indicator of SPI from Sep 18 to 24, as displayed in [Figure 15](#), shows that the LMB was moderately and severely dry over the north and south covering all four Member Countries. The conditions were less severe than the previous week. The impacted areas are listed in the table below.

Number	Country	Province	Mderate	Severe	Extreme
1	Cambodia	Ratana Kiri	x	x	
2	Cambodia	Mondul Kiri	x		
3	Cambodia	Kampong Cham	x	x	
4	Cambodia	Prey Veng	x	x	
5	Cambodia	Kandal	x	x	x
6	Cambodia	Takeo	x	x	
7	Laos	Phongsaly	x	x	x
8	Laos	Luang Prabang	x	x	
9	Laos	Bokeo	x		
10	Laos	Xayaburi	x		
11	Laos	Vientiane	x		
12	Laos	Luangnamtha	x		
13	Laos	Oudomxay	x	x	
14	Laos	Svannakhet	x		
15	Laos	Borikhamxay	x		
16	Laos	Sekong	x	x	
17	Laos	Attapeu	x		

18	Thailand	Chiang Mai	x		
19	Thailand	Chiang Rai	x	x	
20	Thailand	Payao	x		
21	Thailand	Loei	x	x	
22	Thailand	Nong Bua Lamphu	x		
23	Thailand	Chaiyaphum	x		
24	Thailand	Nakhon Ratchasima	x		
25	Thailand	Chanthaburi	x		
26	Viet Nam	Kon Tum	x		
27	Viet Nam	Dak Lak	x	x	
28	Viet Nam	An Giang	x		
29	Viet Nam	Tra Vinh	x	x	
30	Viet Nam	Ben Tre	x		
31	Viet Nam	Kien Giang	x		
		Moderate			Extreme
		Severe			No drought



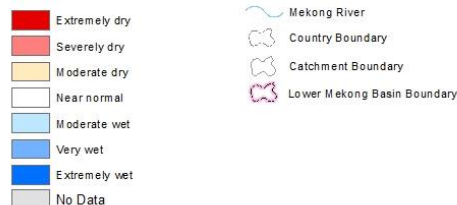
Drought Forecasting and Early Warning for the Lower Mekong Basin



Updated On: 24-09-2023

Weekly Monitoring

Standardized Precipitation Index (SPI)



The drought monitor focus on broad-scale conditions. Local conditions may vary. See accompanying text summary for forecast statements.

Disclaimer: This drought monitoring and forecasting map is calculated based on the satellite imageries with no ground verification. MRC does not guarantee the values and accuracy of the products nor be responsible for any risks of using the products.

Figure 15. Weekly standardized precipitation index from 18 to 24 September 2023.

- **Weekly Index of Soil Water Fraction (ISWF)**

***The internet server of FFG is down at the moment. No soil moisture data are available for the monitoring week.

- **Weekly Combined Drought Index (CDI)**

***Without agricultural indicator, there is also no CDI for this monitoring week.

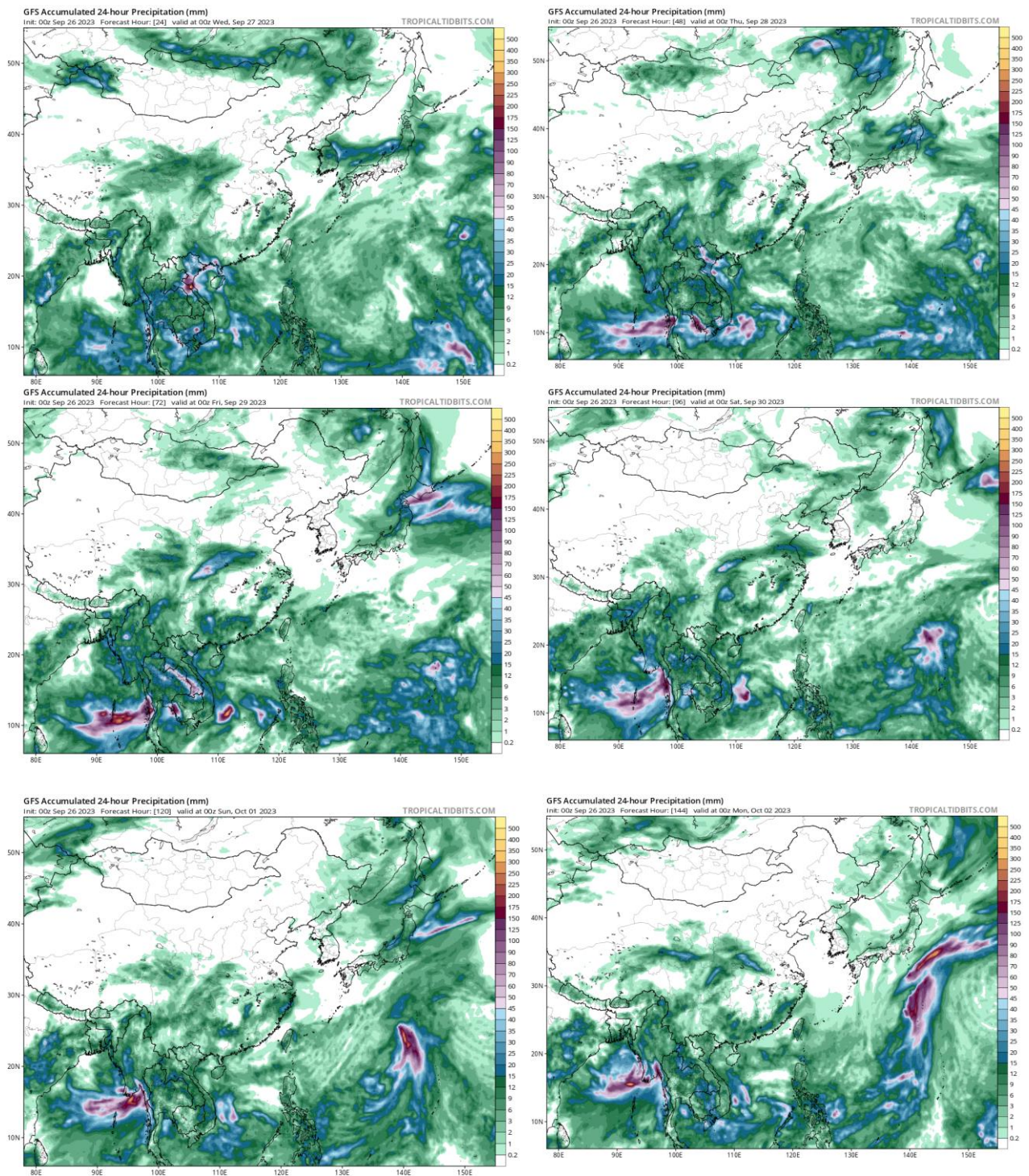
More information on Drought Forecasting and Early Warning (DFEW) as well as the explanation is available here: <http://droughtforecast.mrcmekong.org/templates/view/our-product>. DFEW provides not only weekly monitoring and forecasting information but also a three-month forecast of drought indicators with seasonal outlook which are updated every month based on international weather forecast models. Details on drought forecast are described in section [6.4](#) of this report.

6 Weather and Water Level Forecast and Flash Flood Information

6.1 Weather and rainfall forecast

During September 27- October 03, based on result of the Global Forecast System (GFS), small to very heavy rain (5-95 mm/24h) is forecasted for the LMB area.

[Figure 18](#) shows accumulated rainfall forecast (24h) of the GFS model from 27 September to 03 October.



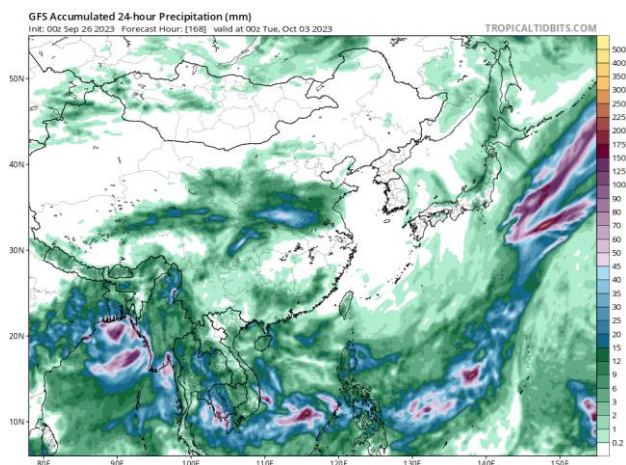


Figure 16. Accumulated rainfall forecast (24 h) based on the Global Forecast System (GFS).

6.2 Water level forecast

Chiang Saen and Luang Prabang

Based on September 25's daily flood forecasting bulletin, the daily forecasted water level at Chiang Saen in Thailand shows slightly decrease of water level from 3.98 m to 3.72 m over the next five days. The trend will keep the water level at this station lower than its LTA.

For Luang Prabang in Lao PDR, the water level will decrease about 0.38 m during the next five days. The current water level is matched with its LTA. Precipitation is forecasted for the area between Chiang Saen and Luang Prabang next week.

Chiang Khan, Vientiane-Nong Khai and Paksane

The water level at Chiang Khan in Thailand is forecasted to go down about 0.26 m, while water level at Vientiane in Lao PDR will decrease about 0.39 m. Furthermore, in Nong Khai of Thailand the water level will decrease about 0.19 m over the next five days; at Paksane in Lao PDR water level will decrease about 0.34 m due to moderate rainfalls and dam operation in the upper catchments. Rainfall is forecasted for the area of Paksane next week. However, the water levels at these stations will stay lower than their LTA value.

Nakhon Phanom to Pakse

The water levels from Nakhon Phanom in Thailand to Pakse in Lao PDR are forecasted to go down between 0.60 m and 1.38 m, due to moderate rainfall predicted and inflows from upstream into these areas. Water levels at these stations will stay lower than their LTA values. Lower to moderate rainfall is forecasted for the area next week.

Stung Treng to Kompong Cham/Phnom Penh to Koh Khel/Neak Luong

WL at Stung Treng and Kratie in Cambodia will go down between 1.22 m and 1.66 m, while at Kompong Cham along the Mekong River the water level will go down about 1.08 m over the next five days. Precipitation is forecasted for the area between Stung Treng and Kompong Cham during next week.

The water levels of the Tonle Sap Lake at Prek Kdam and Phnom Penh Port as well as at Phnom Penh's Chaktomuk on the Bassac River will go down between 0.30 m and 0.50 m over the next five days.

Water levels at most of the stations will go down during next week. Water levels at most stations will be still staying lower than their LTA value. From Chiang Khan to Vientiane / Nong Khai and from Mukdahan to Khong Chaim will be down, and also from Stung Treng to Kompong Cham and downstream at Phnom Penh the water level will be down. Precipitation is forecasted for the low-lying area of Cambodia next week.

Tidal stations at Tan Chau and Chau Doc

For Viet Nam's Tan Chau on the Mekong River and Chau Doc on the Bassac River, the water levels will be staying lower than their LTA level, following daily tidal effects from the sea. Rainfall is forecasted for the Mekong Delta area next week.

The performance of the weekly flood forecast, with an accuracy and data input evaluation from 19 to 25 September 2023, is presented in **Annex 1**.

[Table 2](#) shows the daily flood forecasting Bulletin issued on 25 September 2023. Results of the weekly river monitoring bulletin are also available at http://ffw.mrcmekong.org/bulletin_wet.php.

6.3 Flash Flood Information

With small to very heavy rain for next week, flash floods might be detected in some areas in the LMB. And local heavy rain in a short period of time is possible with unpredictable short flash floods.

Detailed information on Flash Flood Warning Information as well as its explanation is available for download [here](#).

6.4 Drought forecast

There are several climate-prediction models with different scenarios in the upcoming months until November 2023. The MRC's DFEWS adopts an ensemble model called the North America Multi-Model Ensemble (NMME), which averages all scenarios, and downscales the forecasts to the regional level. The Variable Infiltration Capability (VIC) is then used to generate soil moisture and runoff for the whole basin.

[Figure 19](#) below shows the monthly forecasts of CDI for September, October, and November 2023.

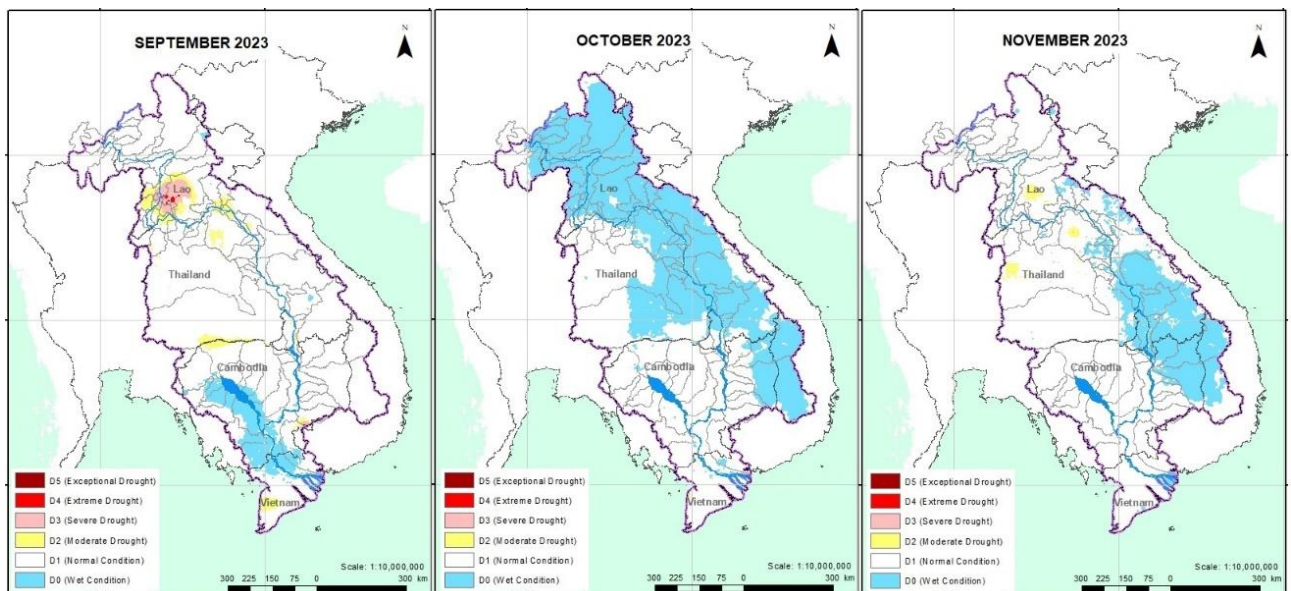


Figure 17. Monthly forecasts of the combined drought index (CDI) for September, October, and November 2023.

Figure 19 above shows that in the next three-month forecasts the LMB will likely experience moderate to severe dry conditions in the northern region and moderate drought in certain southern areas during September. Specifically, in September, moderate to severe droughts are anticipated in Xayabury and Vientiane provinces, and moderate drought in Borikhamxay and Nakhon Phanom provinces in the north. In the southern part of the region, areas including Otdar Meanchey, Burirum, Surin, Si Saket, Champasack, Kampong Cham, Kien Giang, Ca Mau, and Bac Lieu are expected to experience moderate drought. Notably, Vientiane province is expected to face the most severe drought conditions by late September. October is likely wet in the north, eastern part and 3S area. While in November, moderate drought conditions are forecasted for certain areas of Vientiane, Chaiyaphum, as well as Sakon Nakhon provinces in the north, while the eastern and 3S areas of the region are expected to be relatively wet.

7 Summary and Possible Implications

7.1 Rainfall and its forecast

Rain was observed from Chiang Saen in Thailand to Tan Chau and Chau Doc in Viet Nam during September 19-25, including the lower part in Lao PDR and Cambodia, varying from 2.00 mm to 142.60 mm due to the low pressure covered the LMB during the report period. This week rainfall was considered low in the LMB compared with last week rainfall.

Based on the forecasted satellite data, rainfall is forecasted for some areas of the LMB with the value range from 30.00 mm to 100.00 mm for the next seven days. The forecasting model using CHIRPS-GEFS data, moreover, shows significant rainfall (<100 mm) is likely to take place in the Mekong region from 26 September to 02 October 2023.

7.2 Water level and its forecast

According to MRC's observed water level at Jinghong, it showed fluctuated water levels from 536.48 m to 538.15 m during 19-25 September 2023. The current level is staying about 0.63 m higher than its LTA value. The outflow at Jinghong station varied between 1,730.00 m³/s and 3,170.00 m³/s between 19-25 September 2023.

With the decreased outflow from Jinghong upstream, water levels of monitoring stations at Chiang Saen also decreased about 0.13 m from 19 to 25 September 2023. Moreover, at Chiang Khan the water level decreased about 0.55 m, while at Valentine and Nong Khai they decreased between 0.35 m and 0.19 m due to the influence of dam operation upstream and low rainfall. Water levels from Nakhon Phanom to Pakse decreasing between 0.72 m and 1.54 m. The current WLs at Luang Prabang, Chiang Khan, Vientiane and Kratie stations are higher than their LTA levels, **considered normal**. From the stretches of the river at Stung Treng, water levels decreased 1.26 m and stayed about 0.25 m lower than its LTA, while at Kratie water level was down about 1.43 m, staying 0.12 m higher than its LTA level, due to the contributed rainfall from upstream part including Pakse and reservoir operation of the 3S area in Viet Nam.

The flow volume of the Tonle Sap Lake is lower than its LTA (about 56%) up to September 25. From next week, the flow is expected to increase due to moderate rainfall forecasted in the inflow catchments of the Tonle Sap Lake.

From Stung Treng to Kratie and Kompong Cham on the Mekong River, the water levels are expected to decrease between 1.00 m and 1.60 m and will remain lower than their LTA value for the next 5 days. The water levels – at Prek Kdam to Phnom Penh Port on the Tonle Sap, and Chaktomuk to Koh Khel on the Bassac – are forecasted to decrease and stay lower than their LTA value.

The situation in Tan Chau on the Mekong River and Chau Doc on the Bassac River is expected to remain unchanged.

Since the third week of September 2022, water levels across most monitoring stations in the LMB have increased due to the above-average rainfall but still staying lower than their LTA

value (from middle to lower stretches within the LMB). The preliminary analysis of the hydrological conditions in the LMB over July–December 2020 and November 2020 to May 2021 was done as [Situation Report](#), which can be used as reference for the trend of water level and flows of the Mekong River Basin.

The contribution to the Mekong River’s flow from the UMB in China (Yunnan component) is about 16% by the time the river discharges through the Mekong Delta into the Sea. By far the major contribution comes from the two major ‘left-bank’ (Eastern) tributaries between Vientiane – Nakhon Phanom and Pakse – Stung Treng, which together contribute more than 40% of the flows.

7.3 Flash flood and its trends

With the predicted amount of rainfall for the coming week as mentioned earlier in [section 6.1](#), flash floods are likely to be detected in some areas of the LMB during next week.

7.4 Drought condition and its forecast

During **Sep 18-24**, some moderate and severe meteorological droughts were detected in all four countries, mainly in the north and south of the region. They were taking place in some areas of **Ratana Kiri, Mondul Kiri, Kampong Cham, Prey Veng, Takeo, Kandal, Phongsaly, Luang Prabang, Bokeo, Xayaburi, Vientiane, Luangnamtha, Oudomxay, Savannakhet, Borikhamxay, Sekong, Attapeu, Chiang Mai, Chiang Rai, Payao, Loei, Nong Bua Lamphu, Chaiyaphum, Nakhon Ratchasima, Kon Tum, Dak Lak, An Giang, Tra Vinh, Ben Tre, and Kien Giang.**

The three-month forecast shows that the LMB will likely experience moderate to severe dry conditions in the northern region and moderate drought in certain southern areas during September. Specifically, in September, moderate to severe droughts are anticipated in Xayaburi and Vientiane provinces, and moderate drought in Borikhamxay and Nakhon Phanom provinces in the north. In the southern part of the region, areas including Otdar Meanchey, Burirum, Surin, Si Saket, Champasack, Kampong Cham, Kien Giang, Ca Mau, and Bac Lieu are expected to experience moderate drought. Notably, Vientiane province is expected to face the most severe drought conditions by late September. October is likely wet in the north, eastern part and 3S area. While in November, moderate drought conditions are forecasted for certain areas of Vientiane, Chaiyaphum, as well as Sakon Nakhon provinces in the north, while the eastern and 3S areas of the region are expected to be relatively wet.

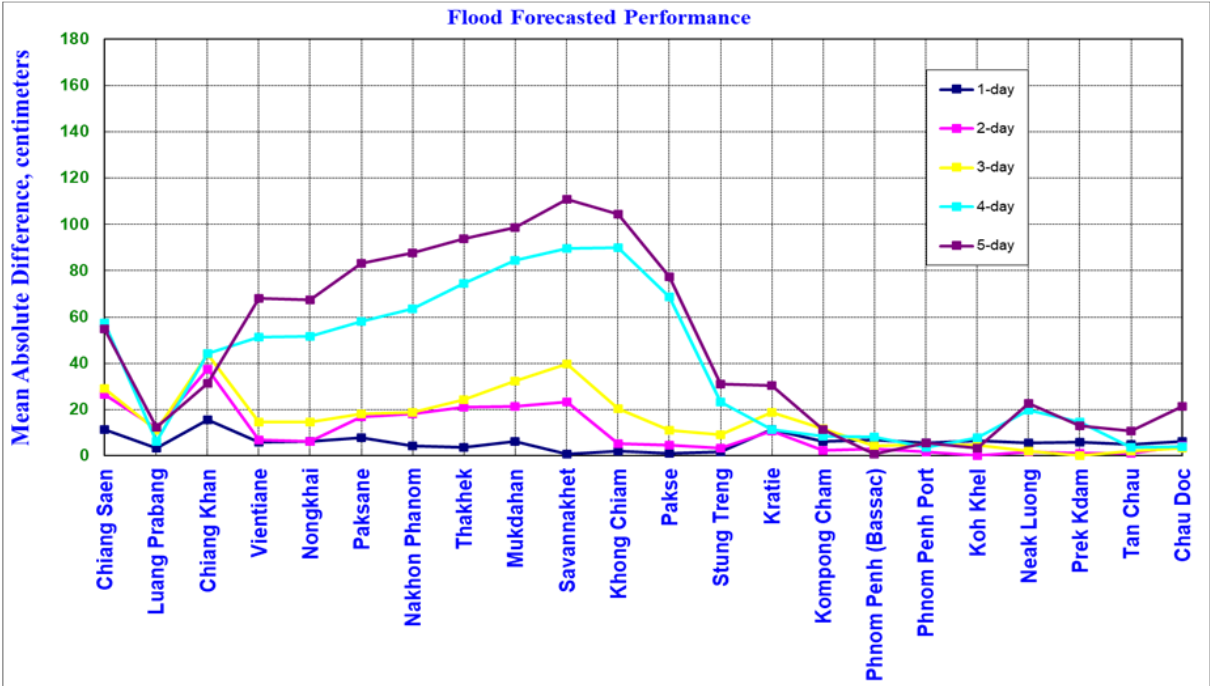
Annex 1: Performance of the weekly flood forecasting

Accuracy

“Accuracy” here refers to the state where data recorded in the MRC’s Mekong River Flood Forecasting System are cleaned and verified.

The adjustment of flood forecasting outcomes from the flood forecasting system requires flood forecasters to have extensive knowledge in hydrology and statistical modelling for estimating the relationships between stations upstream and downstream in the Mekong River Basin. Flood forecasting performance presented in the graph below shows the average flood forecasting accuracy at each key station along the Mekong mainstream from 19 to 25 September 2023.

The forecasting values from 19 to 25 September 2023 show that the overall accuracy is fair for a four-day to five-day forecast in lead time (less than 120 cm) for most of the stations from the upper to the middle parts of the Mekong River with combine information of rainfall and reservoirs' operation in this area during the report period.



Note: The higher percentage of flood forecasting accuracy is due to several key factors as follows:

- Missing rainfall in Cambodia (DOM) data and data input are not sufficient to be used for inputting into the flood forecasting model system.
- Chiang Saen station is influencing by hydropower upstream operation from China.
- Luang Prabang to Chiang Khan and Paksane to Stung Treng to Kratie have been influenced by hydropower operations upstream, tributaries inflows.
- The influence of heavy rainfall caused by storms and hydropower operations from upstream, tributaries inflows and the lower part of the Mekong floodplain, including

the 3S (Stung Treng and Kratie).

- Fluctuations of the water levels at Tan Chau and Chau Doc stations were due to daily tidal effects of the sea in the Mekong Delta.
- Satellite rainfall data were not representative of the actual rainfall at ground stations in some areas of the Mekong region.

Performance based on data from the Member Countries

Flood forecasting performance is based on the hydro-met data received from the Member Countries. The flood forecasting achievement indicated in (%) and (cm) from 1 day to 5 days at each key station, against with Old Benchmark are presented in Table B1 and Table B2.

The evaluation of performance indicators, missing data and completion time for flood forecasting are presented in Table B3 and Figures B4, B5 and B6, respectively from 19 to 25 September 2023.

Table B1: The Mean Absolute Difference (Error) of Flood Forecasting base on old defined Benchmark from 19 to 25 September 2023 in cm

Lead-time Forecasted	Chiang Saen	Luang Prabang	Chiang Khan	Vientiane	Nongkhai	Paksane	Nakhon Phanom	Thakhek	Mukdahan	Savannakhet	Khong Chiam	Pakse	Stung Treng	Kratie	Kompong Cham	Phnom Penh (Bassac)	Phnom Penh Port	Koh Khel	Neak Luong	Prek Kdam	Tan Chau	Chau Doc
1-day	11	3	15	6	6	8	4	4	6	1	2	1	2	11	6	7	6	7	6	6	5	6
2-day	<u>26</u>	12	<u>38</u>	7	6	17	18	<u>21</u>	<u>21</u>	<u>23</u>	5	5	3	11	2	3	2	0	2	1	1	4
3-day	<u>29</u>	11	<u>44</u>	14	15	18	19	<u>24</u>	<u>32</u>	<u>40</u>	<u>21</u>	11	9	19	12	4	5	5	2	0	2	3
4-day	57	6	<u>44</u>	51	51	58	63	74	84	90	90	69	<u>23</u>	11	8	8	4	8	20	15	4	4
5-day	55	12	<u>31</u>	68	67	83	88	94	98	111	105	77	<u>31</u>	<u>30</u>	11	1	6	3	<u>23</u>	13	11	<u>21</u>

Table B2: The Mean Absolute Difference (Error) of Flood Forecasting base on old defined Benchmark from 19 to 25 September 2023 in %

Lead-time Forecasted	Chiang Saen	Luang Prabang	Chiang Khan	Vientiane	Nongkhai	Paksane	Nakhon Phanom	Thakhek	Mukdahan	Savannakhet	Khong Chiam	Pakse	Stung Treng	Kratie	Kompong Cham	Phnom Penh (Bassac)	Phnom Penh Port	Koh Khel	Neak Luong	Prek Kdam	Tan Chau	Chau Doc	Average
1-day	71.4	14.3	85.7	57.1	<u>42.9</u>	0.0	14.3	0.0	<u>28.6</u>	14.3	0.0	14.3	<u>28.6</u>	100.0	85.7	85.7	71.4	100.0	85.7	57.1	100.0	100.0	52.6
2-day	83.3	<u>33.3</u>	66.7	16.7	16.7	<u>33.3</u>	<u>50.0</u>	<u>33.3</u>	<u>33.3</u>	16.7	<u>33.3</u>	<u>33.3</u>	0.0	16.7	16.7	0.0	0.0	<u>33.3</u>	16.7	0.0	<u>50.0</u>	16.7	27.3
3-day	<u>40.0</u>	60.0	60.0	<u>40.0</u>	0.0	0.0	<u>20.0</u>	<u>20.0</u>	<u>40.0</u>	0.0	<u>20.0</u>	<u>20.0</u>	80.0	<u>20.0</u>	<u>20.0</u>	<u>40.0</u>	0.0	80.0	0.0	0.0	<u>40.0</u>	0.0	27.3
4-day	75.0	0.0	<u>50.0</u>	<u>50.0</u>	<u>50.0</u>	<u>25.0</u>	<u>50.0</u>	<u>25.0</u>	<u>25.0</u>	<u>25.0</u>	<u>25.0</u>	<u>25.0</u>	75.0	<u>25.0</u>	0.0	<u>25.0</u>	0.0	100.0	<u>50.0</u>	<u>50.0</u>	<u>25.0</u>	0.0	35.2
5-day	66.7	66.7	<u>33.3</u>	<u>33.3</u>	<u>33.3</u>	<u>33.3</u>	<u>33.3</u>	<u>33.3</u>	<u>33.3</u>	<u>33.3</u>	<u>33.3</u>	<u>33.3</u>	0.0	<u>33.3</u>	66.7	0.0	<u>33.3</u>	<u>33.3</u>	<u>33.3</u>	0.0	66.7	66.7	36.4

Table B3: Overview of performance indicators for the past 7 days from 19 to 25 September 2023

	FF time sent				Arrival time of input data								Missing data (number-mainstream and trib.st.)							
	FF completed and sent (time)	Stations without forecast	FF2 completed and sent (time)	Weather data available (time)	NOAA data	China	Cambodia - DHRW	Cambodia - DOM	Lao PDR - DMH	Thailand - DWR	Viet Nam - SRHMC	Viet Nam - HMS	NOAA data/2dataset	China/2	Cambodia - DHRW/15	Cambodia - DOM/34	Lao PDR - DMH/25	Thailand - DWR/13	Viet Nam - SRHMC/6	Viet Nam - HMS/39
2023																				
<i>week</i>	10:27	#DIV/0!	-	-	08:15	07:10	07:08	09:55	08:47	08:43	07:05	08:15	0	0	204	0	0	8	0	11
<i>month</i>	10:40	#DIV/0!	-	-	08:15	07:10	07:26	09:58	08:43	08:31	07:12	08:17	0	0	238	36	34	0	0	61

Fig. B4: Data delivery times for the past 7 days from 19 to 25 September 2023

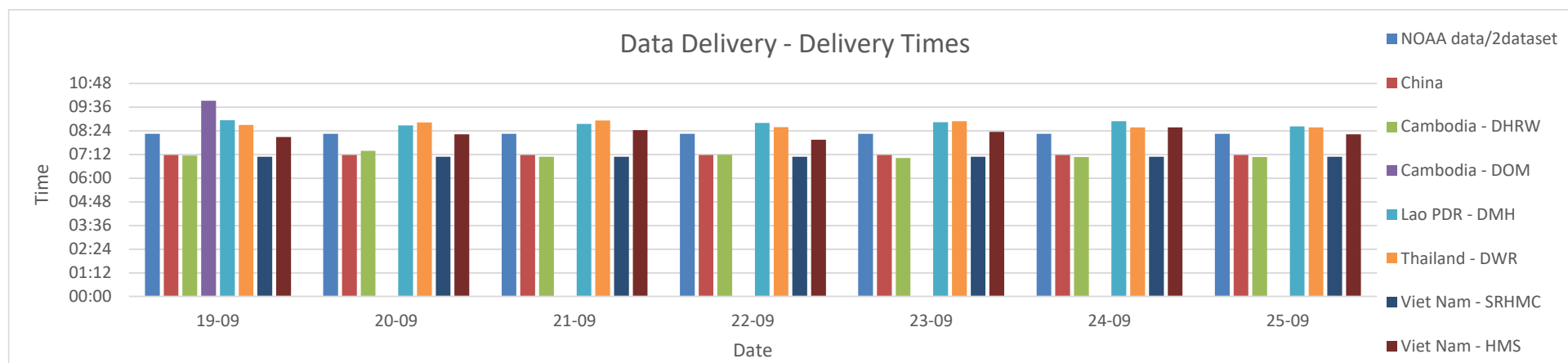


Fig. B5: Missing data for the past 7 days from 12 to 19 to 25 September 2023

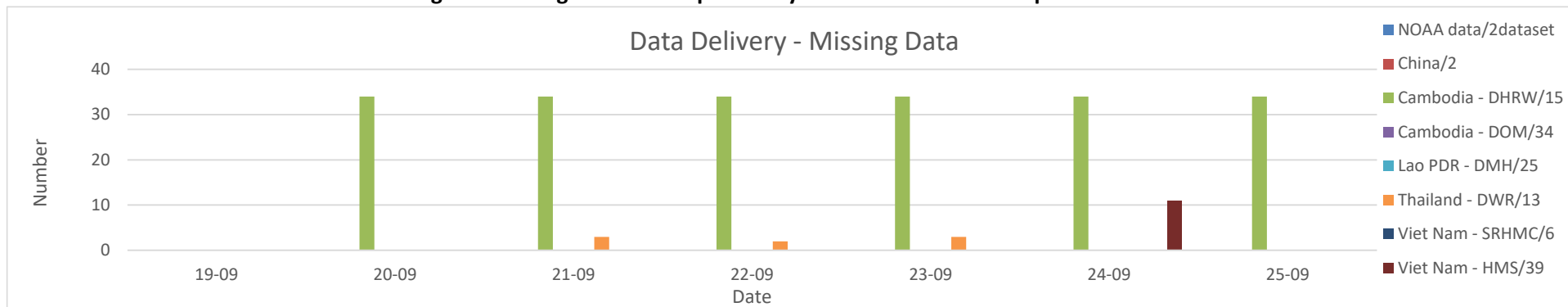
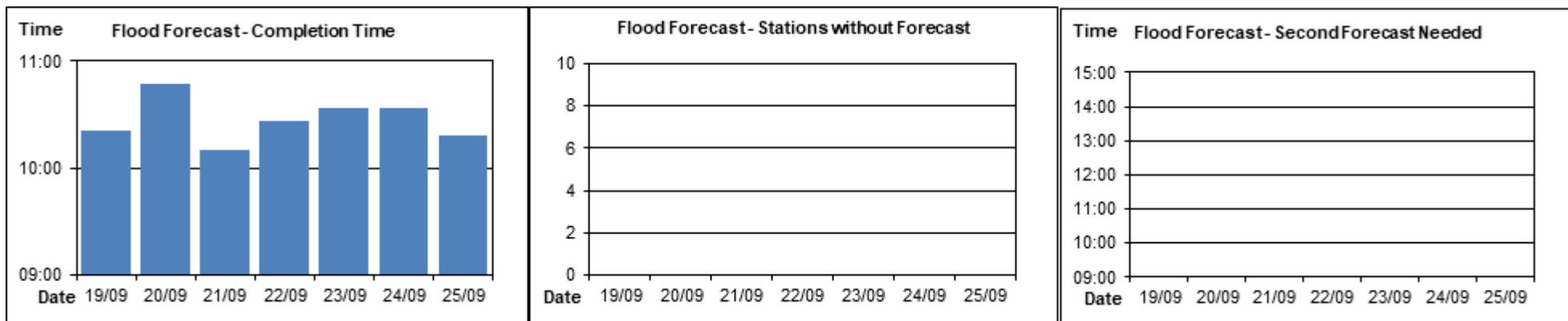


Fig. B6: Flood forecast completion time, stations without forecasts, and second forecasts need from 19 to 25 September 2023





Mekong River Commission Secretariat

P. O. Box 6101, 184 Fa Ngoum Road, Unit 18 Ban Sithane Neua, Sikhottabong District, Vientiane 01000, Lao PDR
Tel: +856 21 263 263. Fax: +856 21 263 264 www.mrcmekong.org

© Mekong River Commission 2021